

ANNUAL FUND

Doing good in the world.
Helping members take action today.



PEACEBUILDING AND
CONFLICT PREVENTION



DISEASE PREVENTION
AND TREATMENT



WATER, SANITATION,
AND HYGIENE



MATERNAL AND
CHILD HEALTH



BASIC EDUCATION
AND LITERACY



COMMUNITY ECONOMIC
DEVELOPMENT



ENVIRONMENT

**THE ROTARY FOUNDATION TRANSFORMS YOUR GIFTS
INTO SERVICE PROJECTS THAT CHANGE LIVES.**

By giving to the Annual Fund, you make sustainable projects possible so that together, we can make people's lives better — close to home and around the globe.

TAKE ACTION: rotary.org/donate

WHAT IS THE ANNUAL FUND?

The Annual Fund is the main funding source for The Rotary Foundation's programs. Gifts to the Annual Fund empower members to implement sustainable service projects in their communities and around the world — fighting disease, providing education, protecting the environment, and more. You can direct Annual Fund contributions toward the Annual Fund-SHARE, the World Fund, or an area of focus fund.

When you donate to the Annual Fund-SHARE, a portion of that gift later becomes available to your district through District Designated Funds. This lets your district focus on the projects that are most important locally.

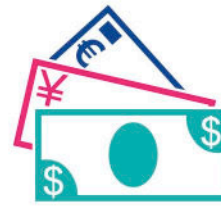
YOUR GIFT AT WORK

When you donate to the Annual Fund-SHARE:

- For three years, your contribution is invested.
- After three years, that money is made available to fund projects. After deducting 5% for expenses:
 - Half of the funds goes into your district's District Designated Funds (also known as DDF). Your district can use it to help fund local and international projects. It decides how to use the money.
 - The other half goes to the World Fund. This money is used for grants, grant matches, Foundation programs that are available to all Rotary districts, or aid where the Trustees determine it to be needed most.

EVERY ROTARIAN, EVERY YEAR

The Every Rotarian, Every Year initiative aims to increase support for the Annual Fund and strengthen engagement with the Foundation. It asks every Rotary member to contribute to the Annual Fund and participate in a Foundation grant or program every year.



Donation to Annual Fund SHARE

Donation is invested for 3 years; growth supports Foundation operations.



SPENDING DECISIONS SHARED

World Fund
(Trustee discretion)



GLOBAL GRANTS AND PROGRAMS*

District Designated Funds (DDF)
(District discretion)



DISTRICT GRANTS GLOBAL GRANTS

*Includes PolioPlus, Rotary Peace Centers, other districts, and the Endowment Fund (areas of focus)

DID YOU KNOW?



Donors who give US\$25-99 contribute an average of US\$5-6 million to the Foundation each year. When every member gives every year, it makes life-changing, sustainable projects possible. Gifts of any size can make a big impact.

INDIVIDUAL RECOGNITIONS



SUSTAINING MEMBERS

A Rotary Foundation Sustaining Member gives US\$100 or more to the Annual Fund each year.



PAUL HARRIS SOCIETY MEMBERS

The Paul Harris Society recognizes Rotary members and friends of the Foundation who express their intent to contribute US\$1,000 or more each year to the Annual Fund, PolioPlus Fund, or an approved Foundation grant.

ARCH KLUMPH SOCIETY MEMBERS

Named for the sixth president of Rotary, the Arch Klumph Society recognizes the Foundation's highest tier of donors — those who have contributed US\$250,000 or more in their lifetime.

Recognition as an Arch Klumph Society member includes an induction ceremony, along with the opportunity to have a portrait and biography in the interactive gallery at Rotary International World Headquarters.



PAUL HARRIS FELLOWS

Paul Harris Fellow recognition is given in appreciation to anyone who contributes (or has a contribution made in their name, using Foundation recognition points) a gift of US\$1,000 or more cumulatively to the Annual Fund, PolioPlus Fund, or an approved Foundation grant.



MAJOR DONORS

The Rotary Foundation recognizes individuals or couples whose combined giving reaches US\$10,000, regardless of the gift designation.

This recognition level can be achieved only through personal contributions and not through recognition points.



CLUB RECOGNITIONS



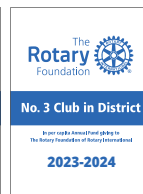
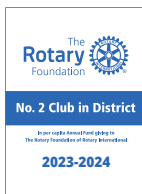
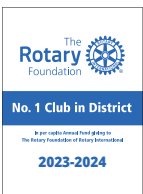
100% FOUNDATION GIVING CLUB

This recognizes clubs that achieve an average of US\$100 in per capita giving and 100% participation, with every dues-paying member contributing at least US\$25 to any or all of the funds of The Rotary Foundation during the Rotary year.



EVERY ROTARIAN, EVERY YEAR CLUB RECOGNITION

This recognizes clubs in which every dues-paying member personally contributes at least US\$25 to the Annual Fund during the year and the club achieves a minimum Annual Fund contribution of US\$100 per capita during the Rotary year.



TOP 3 PER CAPITA IN ANNUAL FUND GIVING

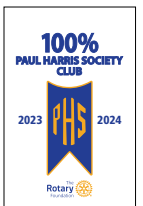
This recognizes the three clubs in each district that give the most, per capita, to the Annual Fund.

Clubs that give at least US\$50 per capita are eligible.



100% PAUL HARRIS FELLOW CLUB

This recognizes clubs in which all dues-paying members are all Paul Harris Fellows at the time when the governor requests the banner. This is a one-time recognition.



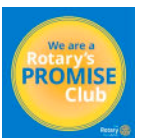
100% PAUL HARRIS SOCIETY CLUB

This recognizes clubs in which every dues-paying member contributes at least US\$1,000 to the Annual Fund, PolioPlus, or global grants within a Rotary year.



ROTARACT GIVING CERTIFICATE

This recognizes Rotaract clubs whose members contribute a total of US\$100 or more to the Foundation during the year.



ROTARY'S PROMISE CLUB

This recognizes clubs in which every dues-paying member supports the Endowment with a commitment of US\$1,000 or more through an outright gift or in an estate plan.



WAYS TO GIVE

Your generous contributions are essential to Rotary programs around the world. Make a gift to honor or remember someone special.

- Donate online at rotary.org/donate.
- Give a check to your club Foundation chair.
- Mail your gift directly to the Foundation or your regional Rotary office.
- Automate your giving through Rotary Direct (available only in U.S. dollars through Rotary.org).

No matter how you donate, your gifts have a big impact when they're put to use by our Foundation and by members to do good in the world.

LEARN MORE

The Annual Fund
my.rotary.org/annual-fund

Donor recognition
rotary.org/donate/recognition

The Rotary Foundation
rotary.org/about-rotary/rotary-foundation

The Arch Klumph Society
rotary.org/about-rotary/history/arch-klumph-society

TAKE ACTION: rotary.org/donate